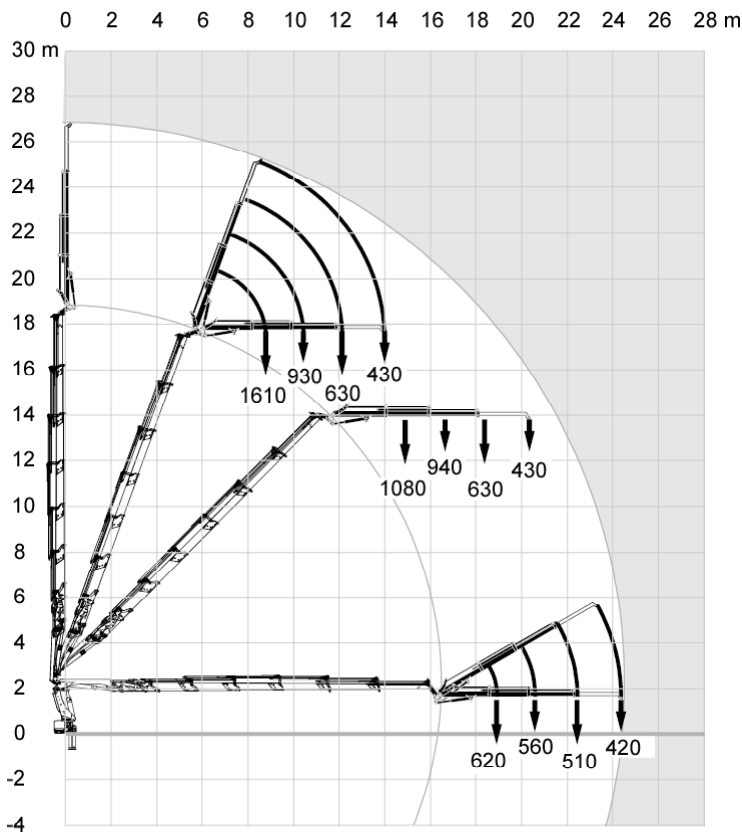
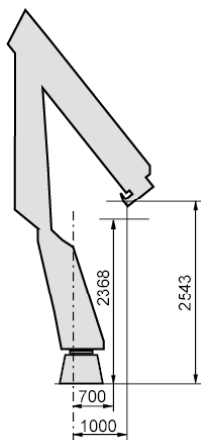


Load Diagram



Side View Unfolded Close in Area



Capacity and performance

Lifting capacity with ADC	245.3 (kNm)
Lifting capacity	228.5 (kNm)
Standard lifting capacity at standard outreach with ADC	2.6 (m) - 9400 (kg)
	4.5 (m) - 5500 (kg)
	6.1 (m) - 3900 (kg)
	7.9 (m) - 2840 (kg)
	9.8 (m) - 2180 (kg)
	11.8 (m) - 1740 (kg)
	13.9 (m) - 1420 (kg)
	16.1 (m) - 1220 (kg)
Standard lifting capacity at standard outreach	2.6 (m) - 8800 (kg)
	4.5 (m) - 5200 (kg)
	6.1 (m) - 3600 (kg)
	7.9 (m) - 2620 (kg)
	9.8 (m) - 2000 (kg)
	11.8 (m) - 1580 (kg)
	13.9 (m) - 1300 (kg)
	16.1 (m) - 1100 (kg)
Manual lifting capacity at extension	18.3 (m) - 980 (kg)
	20.4 (m) - 840 (kg)
Heavy lift capacity at heavy lift outreach	2.2 (m) - 10900 (kg)
Hydraulic boom extension	11.7 (m)
Manual max outreach	23.3 (m)
Lifting height above installation level hydraulic	18.8 (m)
Lifting height above installation level manual	23.1 (m)
Slewing torque	34 (kNm)
V80 Slewing speed	15 (°/s)
Slewing angle	420 (°)
Lifting speed	2.1 (m/s)
Jib hydraulic outreach	22.7 (m)
Jib manual outreach	24.7 (m)
Jib standard lifting capacity at standard extension	19.1 (m) - 620 (kg)
	20.7 (m) - 560 (kg)
	22.6 (m) - 510 (kg)
Jib manual lifting capacity at manual extension	24.6 (m) - 420 (kg)

Functional demands

Recommended oil flow low	90 (l/min)
Recommended oil flow high	120 (l/min)
Working pressure	34 (MPa)
Max slope viable at full capacity	5 (°)

Weights and measurements

Height in folded position	2633 (mm)
Width in folded position	2500 (mm)
Installation space needed	1215 (mm)
Weight of crane	3950 (kg)
Weight support leg equipment	402 (kg)
Weight of crane with Jib	3950 (kg)